



MALDEF

The Latino Legal Voice for Civil Rights in America.

LOS ANGELES COUNTY REDISTRICTING PLAN

ABOUT MALDEF

- Founded in 1968, MALDEF is the nation's leading Latino legal civil rights organization. Often described as the “law firm of the Latino community,” MALDEF promotes social change through advocacy, communications, community education, and litigation in the areas of education, employment, immigrant rights, and political access.
- MALDEF National Redistricting Program
 - Multiple state redistricting strategy from coast to coast
 - Regional Teams of Attorneys, Organizers, & GIS Analysts
 - Focus on Latino opportunities to elect candidates of choice on statewide and local levels

MALDEF IN CALIFORNIA

- Community Education – Co-Hosted 16 workshops
 - Redistricting 101, How to Participate, and Community of Interest exercises
 - Received input to inform mapping
- Community Technical Assistance
 - Provide mapping support or map analysis
- Multiple Collaborations
 - Unity Mapping Table
 - Redistricting CA
 - Various Local Partnerships

MALDEF REDISTRICTING PRINCIPLES

- MALDEF Draws With the Following Principles:
 - Comply with the U.S. Constitution
 - Comply with the Federal Voting Rights Act
 - Respect as many Communities of Interests as complying with the law allows
 - Informed by Workshops and Collaborations
- *If Necessary, Litigate*

MALDEF KEY REDISTRICTING LITIGATION

- *Garza v. County of Los Angeles (1989)* – Los Angeles Board of Supervisors
- *Cano v. Davis (2001)* – San Fernando Valley and San Diego
- *LULAC v. Perry (2006)* – Texas Redistricting; US Supreme Court upheld Section 2 of the VRA
- *Luna v. County of Kern (2016)* – Kern County

2021 CALIFORNIA MAPPING GOALS

- Comply with United States and California law
- Develop plans that respect California's demographics
- **Ensure all California statewide plans must reflect the Latino population growth, which is driven by significant increase in citizen voting age population**

TERMINOLOGY

Latino Majority District: a district in which Latinos comprise 50%+1 of the Citizen Voting Age Population (CVAP). It may be mandated by the VRA dependent on racially polarized voting analysis (RPV)

Latino Opportunity District: a district in which Latinos can effectively elect a candidate of choice

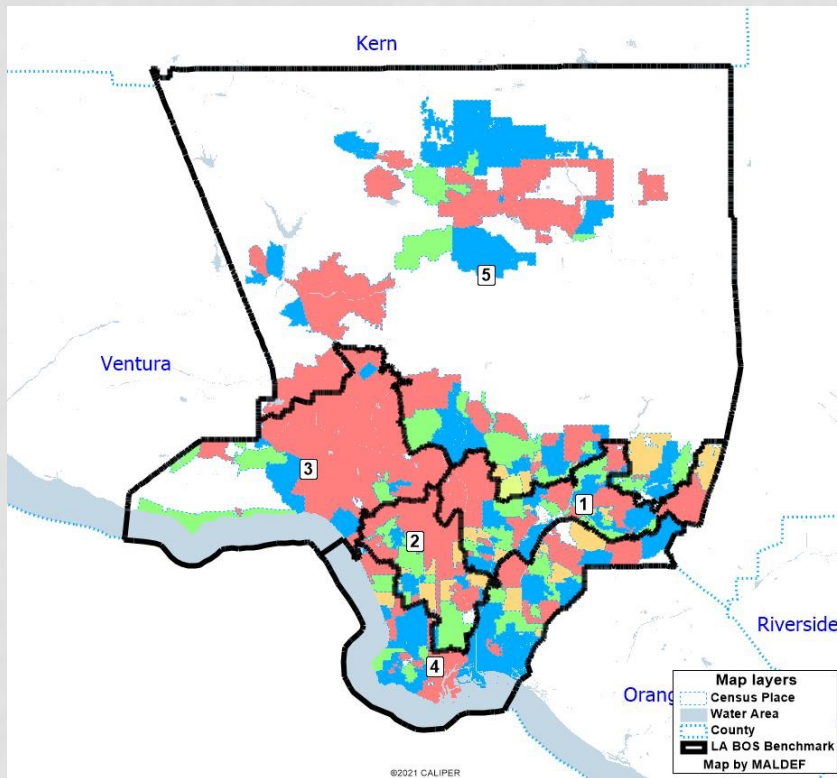
Latino Influence District: a district in which Latinos are not a majority of the population but can still substantially influence the election or the decisions of an elected representative

MALDEF PLAN OVERVIEW

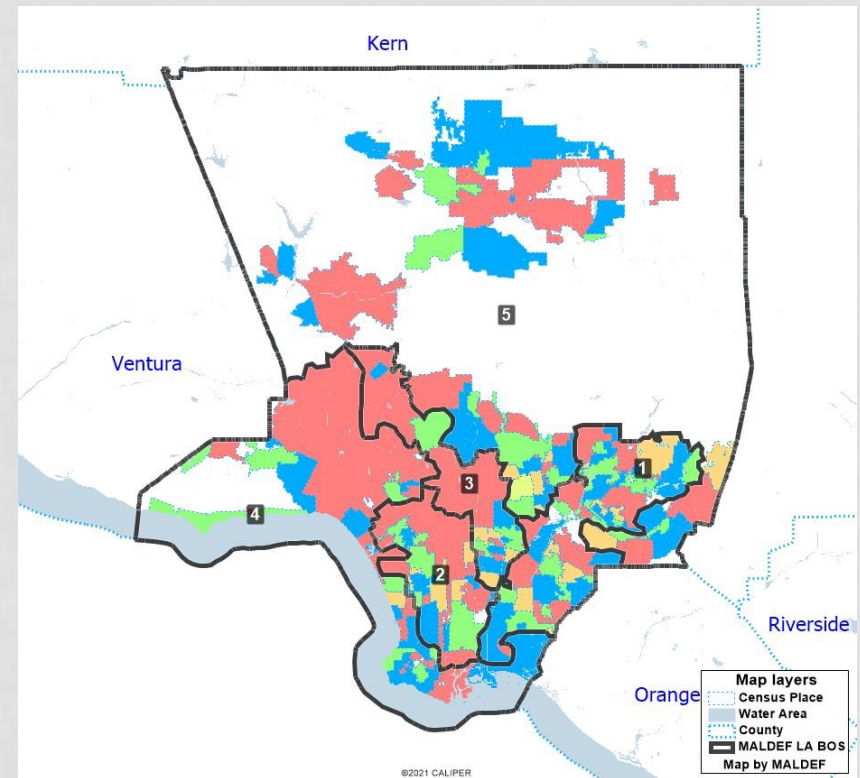
- Total Plan Deviations*
 - Plan Deviation Range: **73,902 (-32,497 to +41,405) persons**
 - % Plan Deviation Range: **3.68% (-1.62% to +2.06%)**
- VRA Compliance*
 - Contains **2 Latino majority CVAP districts**
 - *Benchmark contains 1 Latino majority CVAP district*
 - **1 New Latino Opportunity District**
- Contiguous
- Preserved as many Communities of Interest and Cities as possible
 - Only three city splits (Los Angeles, Long Beach, & Torrance)
 - Kept key COIs together; followed LA City Neighborhood Council boundaries or major roads
- **All Total Population and CVAP statistics via the SWDB Adjusted Redistricting Data set*

LOS ANGELES COUNTY OVERVIEW

Benchmark



MALDEF (10/26/2021)



QUEST FOR A 2ND LATINO OPPORTUNITY DISTRICT

- Background
 - 1989 - MALDEF won its case to create the first Latino opportunity district under the Federal Voting Rights Act
 - 2011 – The Latino community had grown to enough for a second Latino opportunity district; Latinos had grown to about 32.6% of the citizen voting age population.
 - **The Board of Supervisors denied the opportunity despite massive public participation**



Photo Credit: LA Times

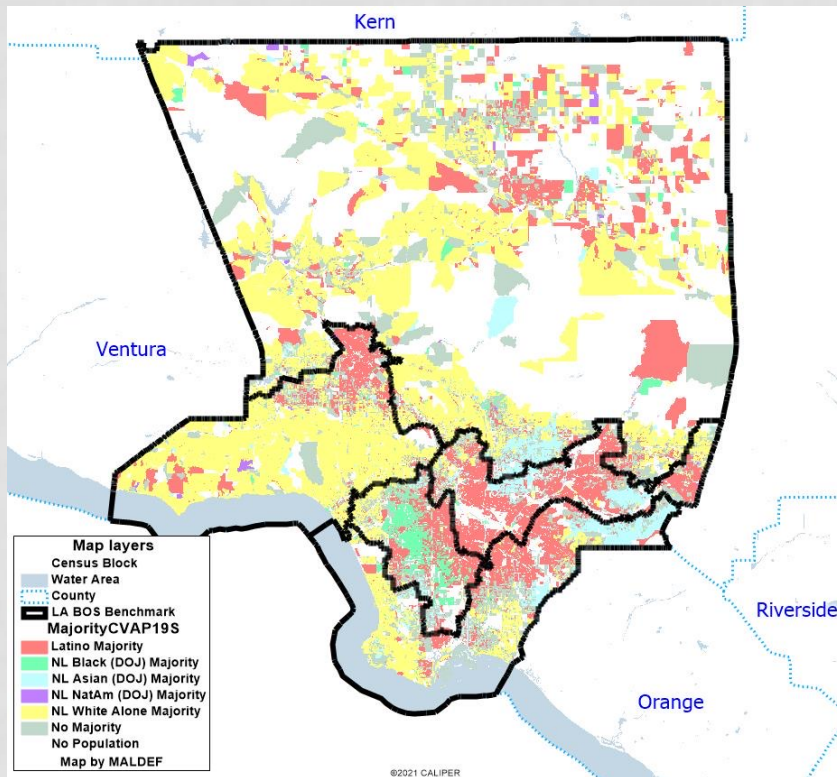
QUEST FOR A 2ND LATINO OPPORTUNITY DISTRICT

- Today
 - Latinos are now 38.8% of LA County citizen voting age population (CVAP)

The LAC CRC has an opportunity to give voice to the Latino community

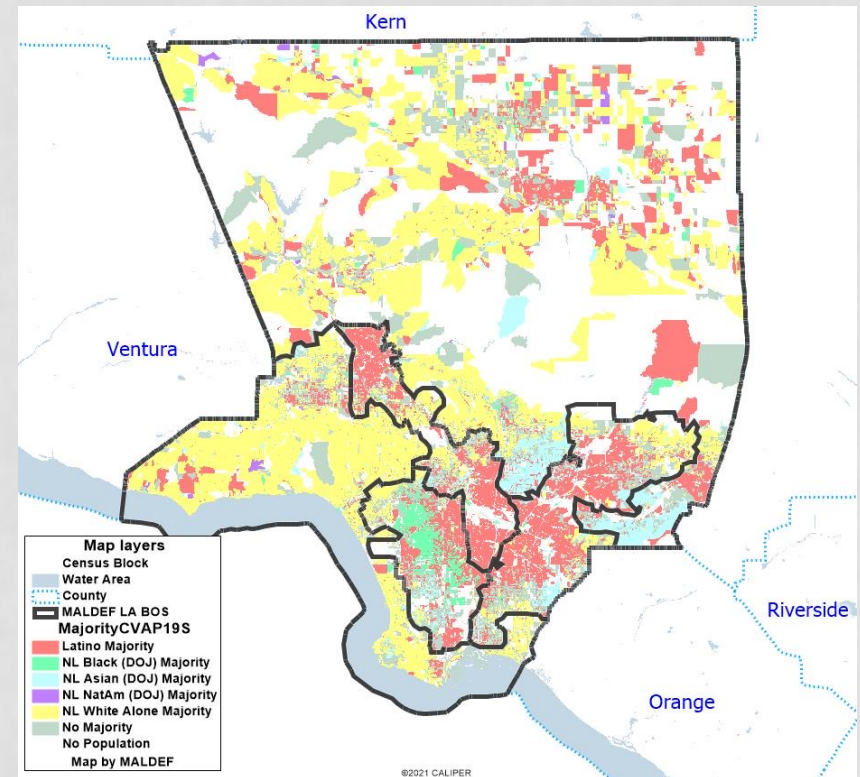
LOS ANGELES COUNTY MAJORITY CVAP

Benchmark



Current Plan only gives Latinos an opportunity to elect a candidate of choice in one district

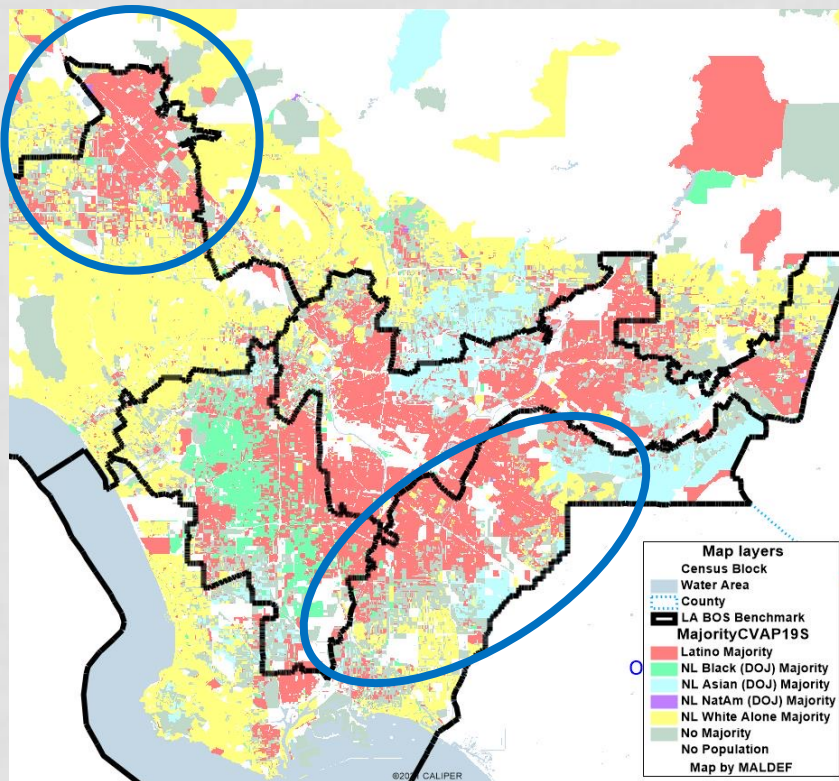
MALDEF (10/26/2021)



MALDEF Plan gives Latinos a chance to elect in two districts

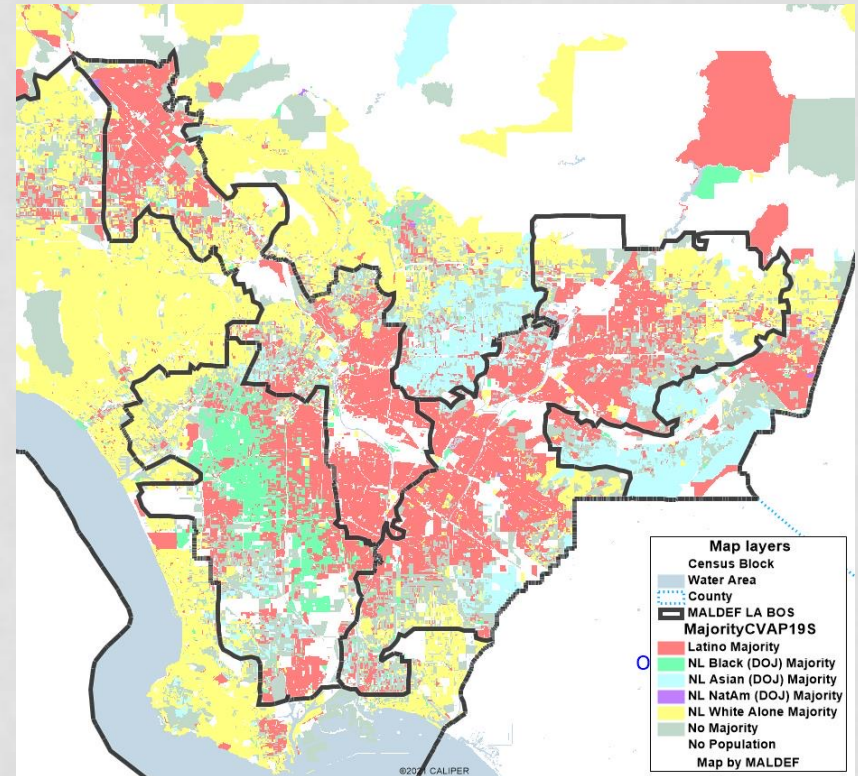
LOS ANGELES COUNTY (DETAIL) MAJORITY CVAP

Benchmark



Current Plan separates Latinos into two districts where they cannot elect a candidate of choice (Blue) and packs other Latinos into one district. SGV Asians also separated.

MALDEF (10/26/2021)

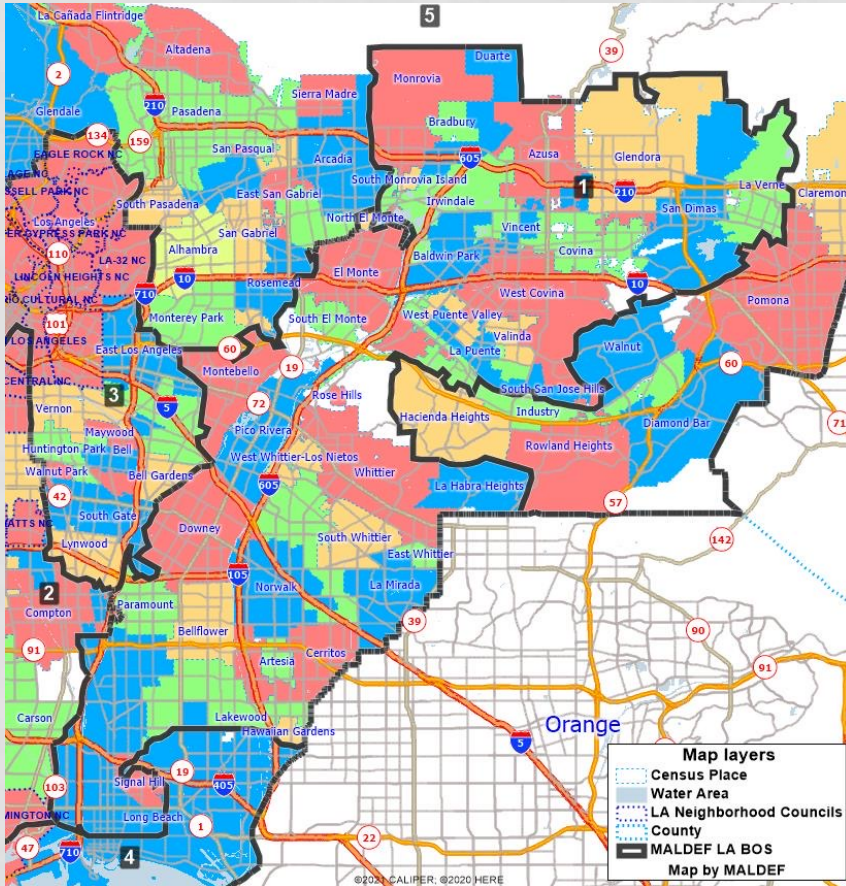


MALDEF Plan unites Latinos in LA County in compact, reasonable manner, while respecting current Black opportunity *and* giving the Asian community a strong influence (or coalition) district

MALDEF PLAN

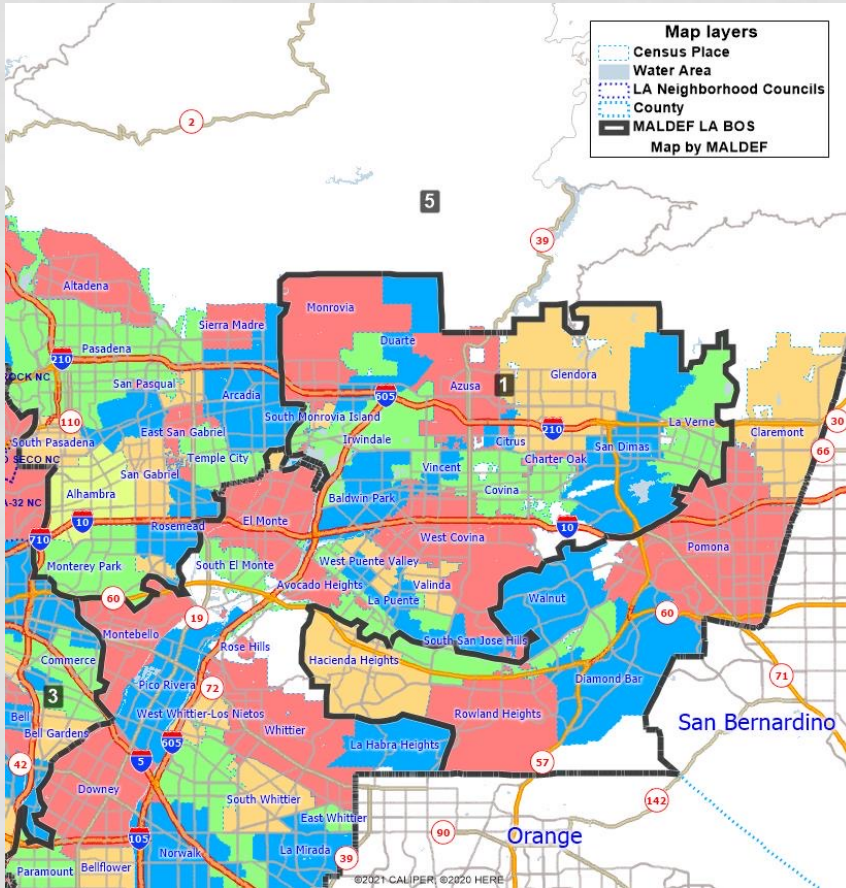
DISTRICT PROFILES

MALDEF BOS 1

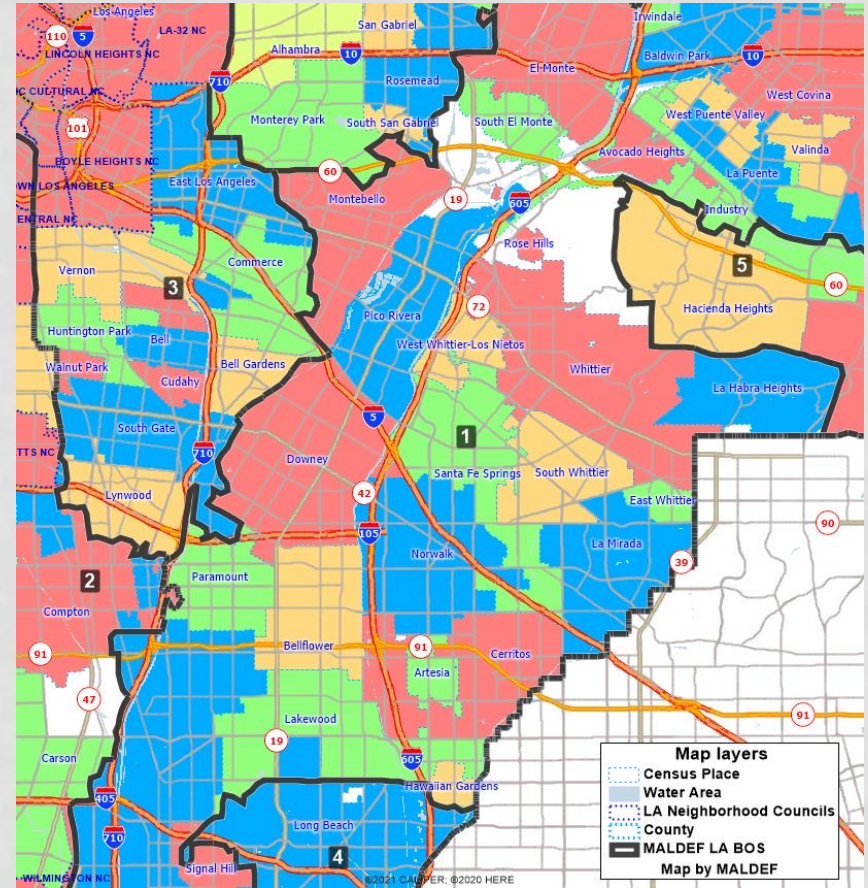


- **Total Population:** 1,977,091
 - **Deviation:** -32,497
 - **%Deviation:** -1.62%
 - **%Latino CVAP:** 54.08%
 - **%Black CVAP-DOJ:** 6.57%
 - **%Asian CVAP-DOJ:** 16.39%
 - **%Native American CVAP-DOJ:** 0.45%
 - **%NL-White CVAP:** 21.44%
-
- **Latino Majority District**
 - **Latino Opportunity District**
-
- **Cities/Communities:**
 - East San Gabriel Valley
 - Gateway Cities
 - Northwest Long Beach
 - “The 605 Freeway” District

MALDEF BOS 1 DETAIL

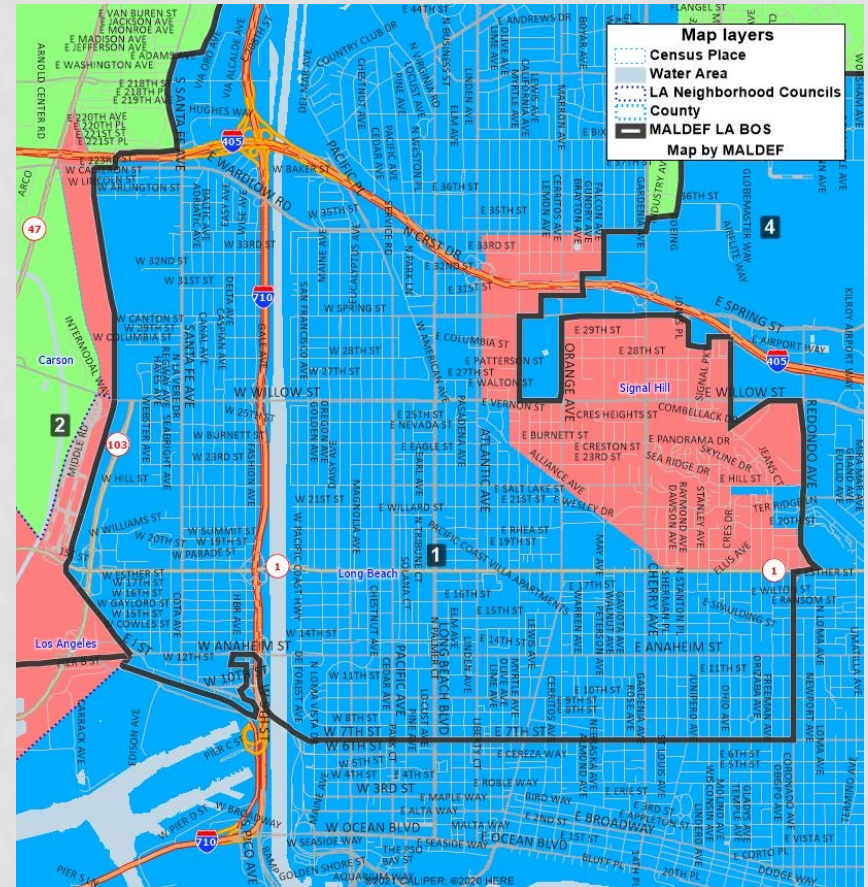
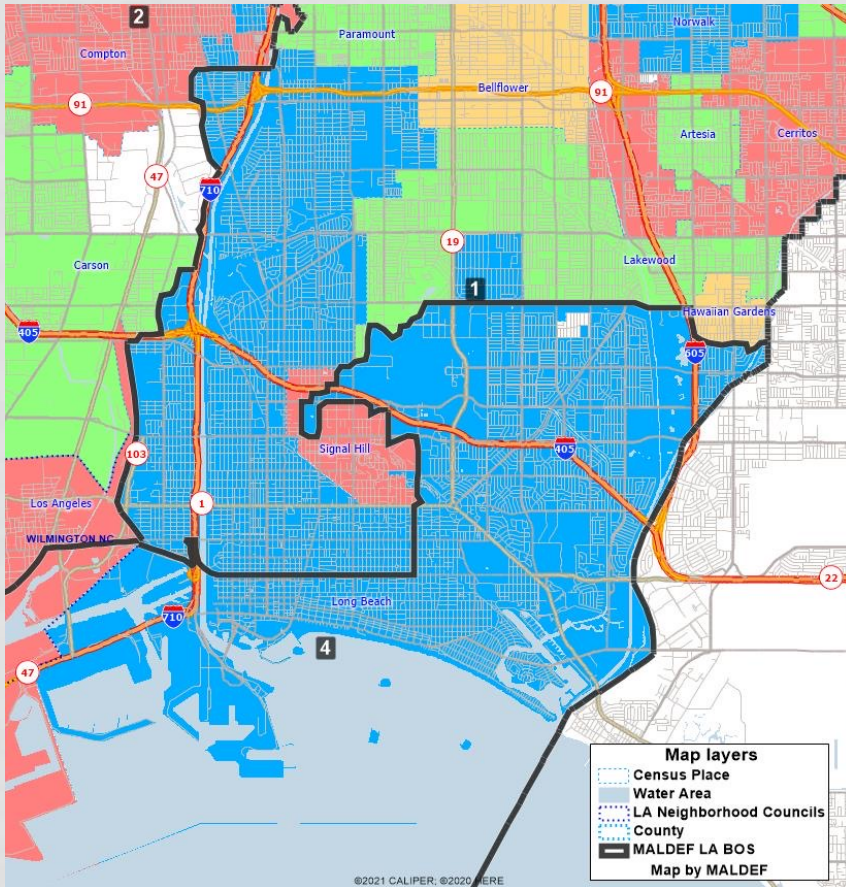


East San Gabriel Valley whole, allowing for Asian COIs of West San Gabriel Valley and Hacienda Heights to Diamond Bar to be together in BOS5.



Gateway cities along the I-605 all united.

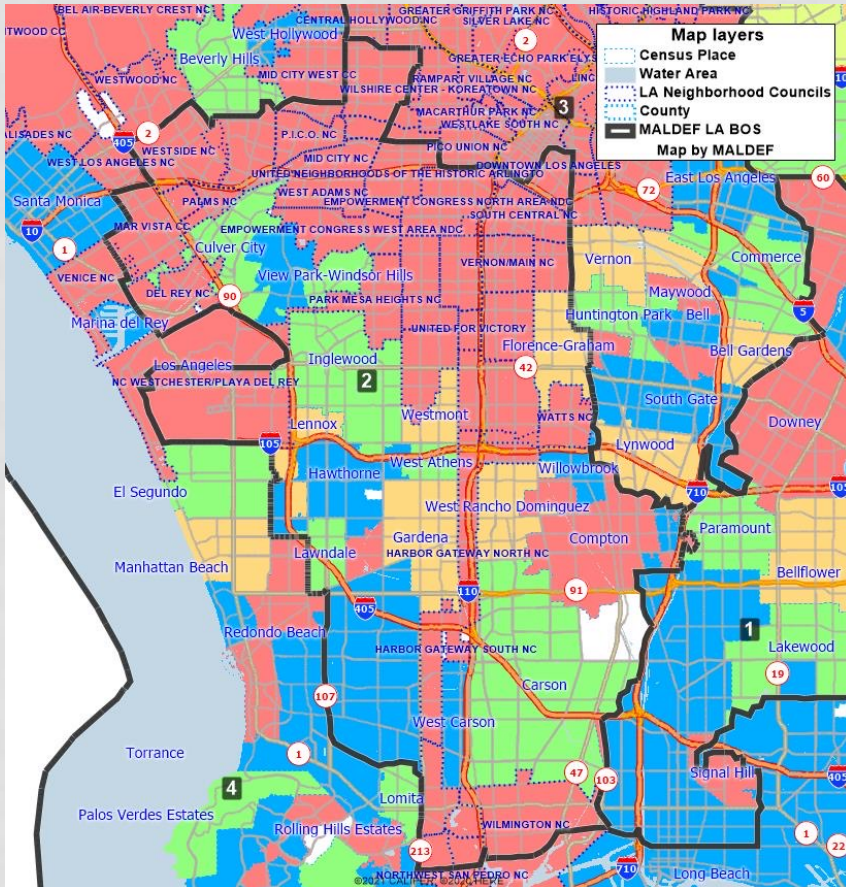
LONG BEACH DETAIL



Long Beach cut for total population and Voting Rights Act consideration.

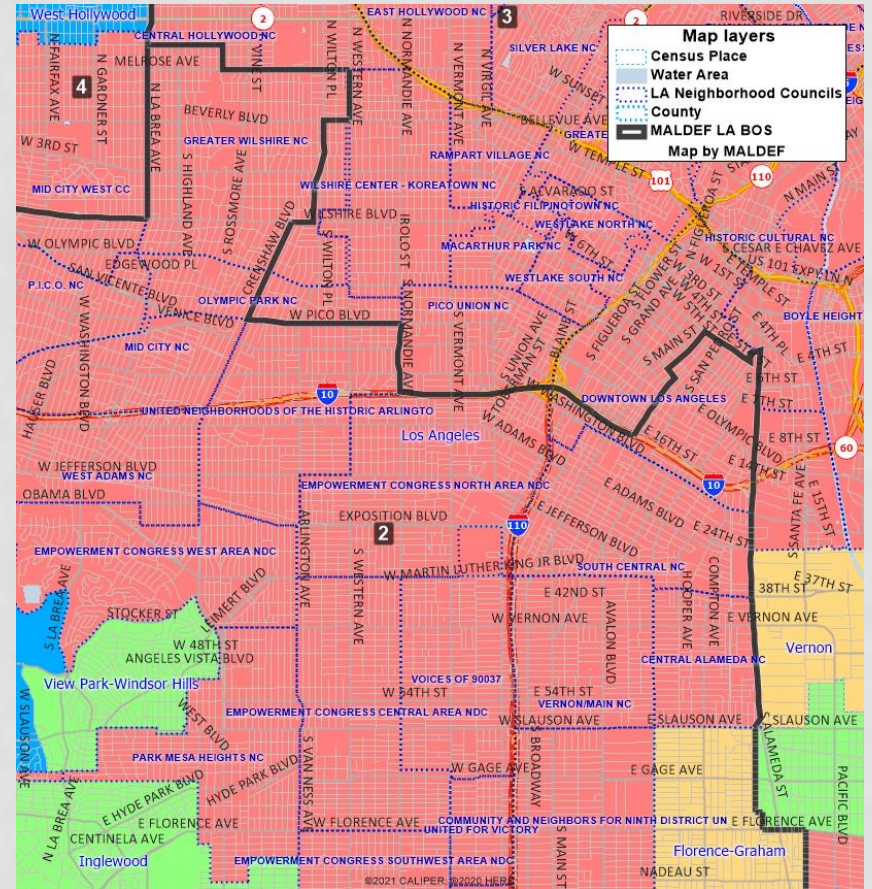
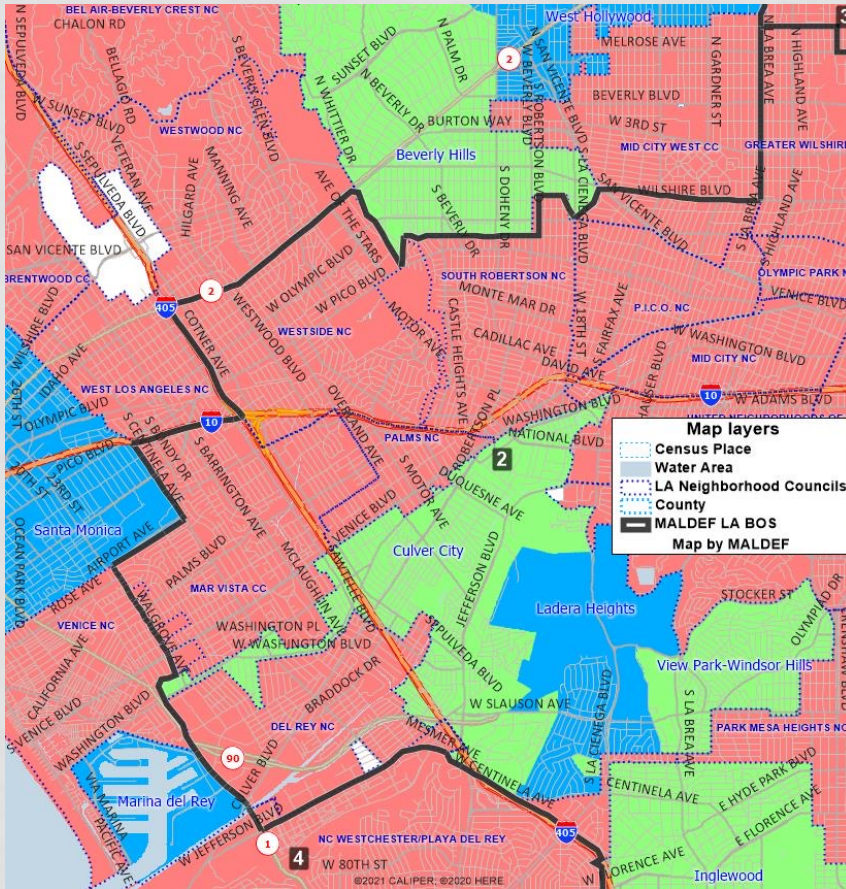
Long Beach cut cleanly at 7th St and Redondo Ave, as major roads and to preserve a Cambodian COI identified by AAAJ-LA

MALDEF BOS 2

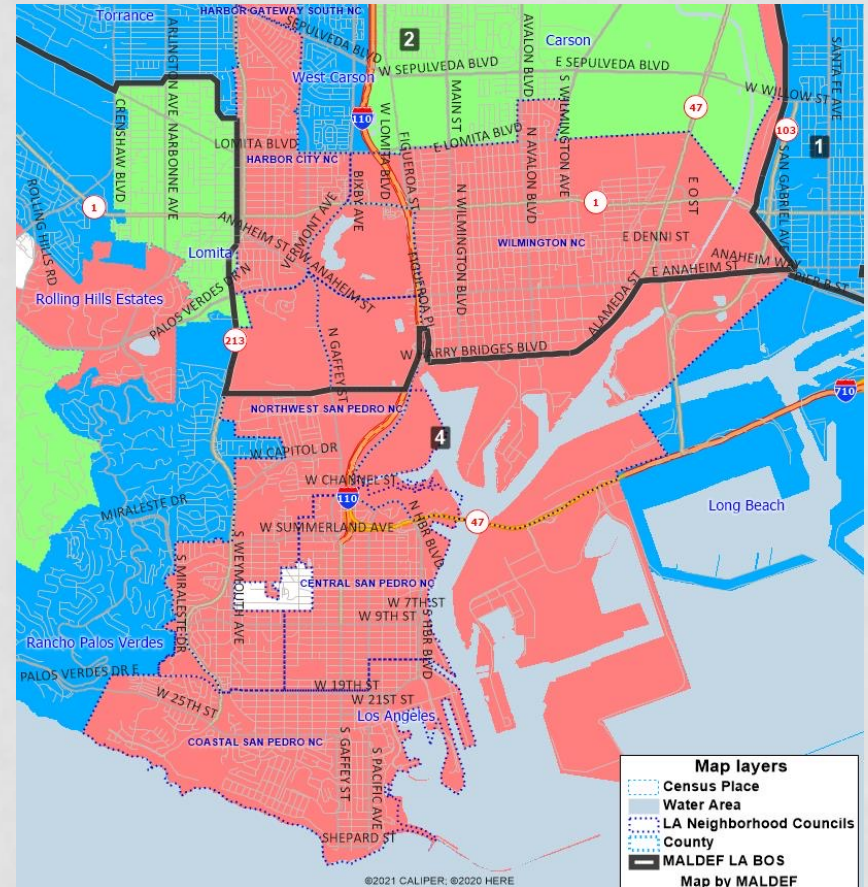
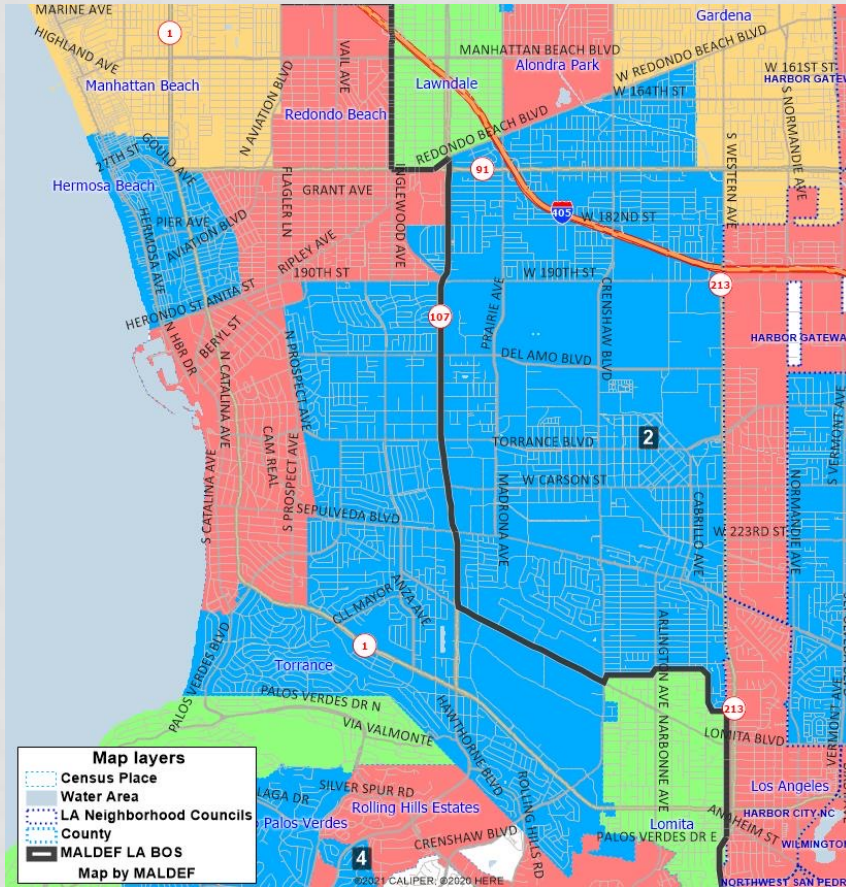


- **Total Population:** 1,993,807
 - **Deviation:** -15,781
 - **%Deviation:** -0.79%
 - **%Latino CVAP:** 39.69%
 - **%Black CVAP-DOJ:** 29.74%
 - **%Asian CVAP-DOJ:** 10.66%
 - **%Native American CVAP-DOJ:** 0.33%
 - **%NL-White CVAP:** 18.15%
-
- **Latino Influence District**
 - **Black Opportunity District**
-
- **Cities/Communities:**
 - South Los Angeles County
 - Inglewood, Hawthorne
 - Compton, Watts, Willowbrook
 - Carson, Wilmington, Gardena, East Torrance
 - Torrance split similar to AAAJ split for US Congress, respect Torrance/Gardena COI

MALDEF BOS 2 DETAIL

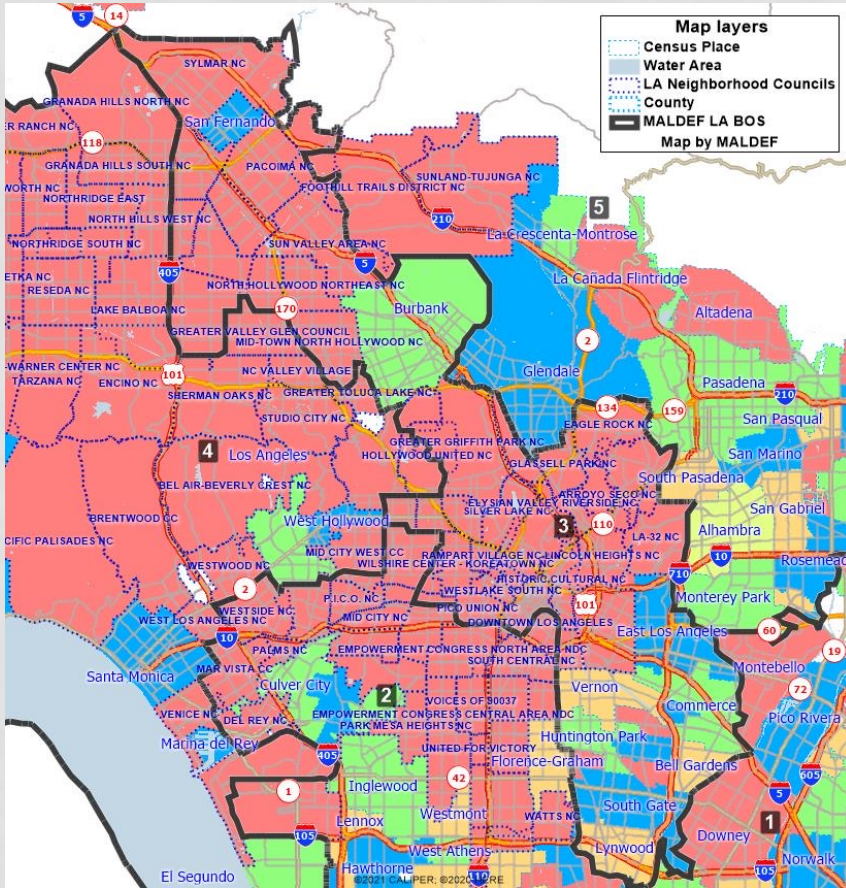


MALDEF BOS 2 DETAIL



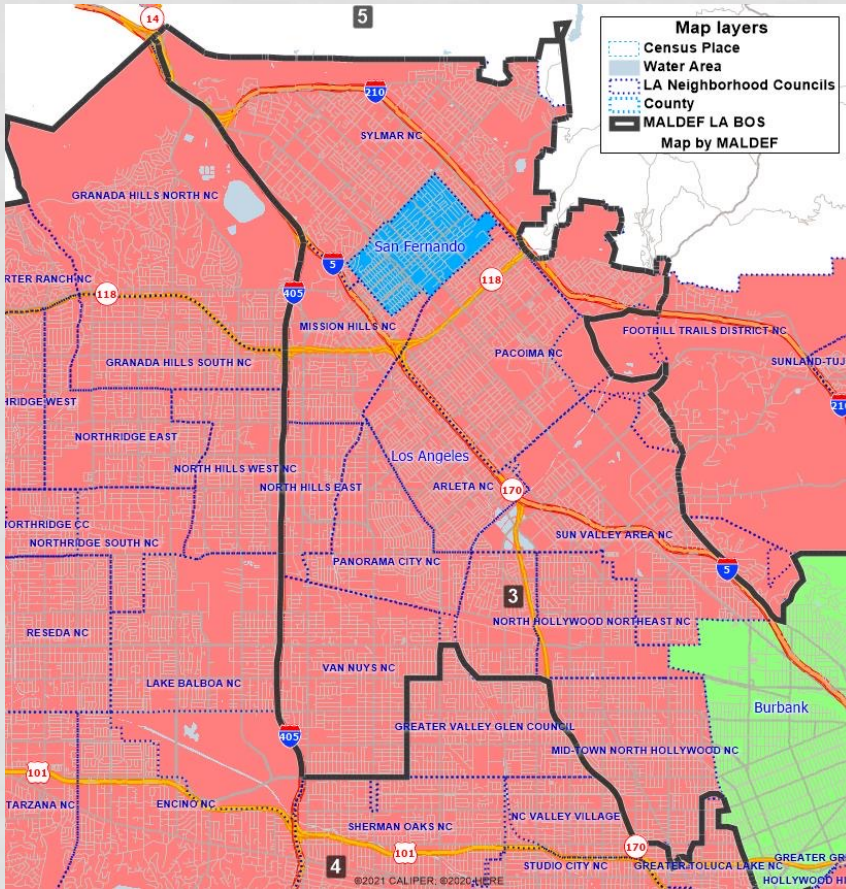
Torrance cut for total population reasons and to respect a key COI given by AAAJ-LA, to keep West Torrance and South Gardena together. Cut is Hawthorne Blvd and Lomita Blvd, mirroring a recommended division at Congressional level

MALDEF BOS 3

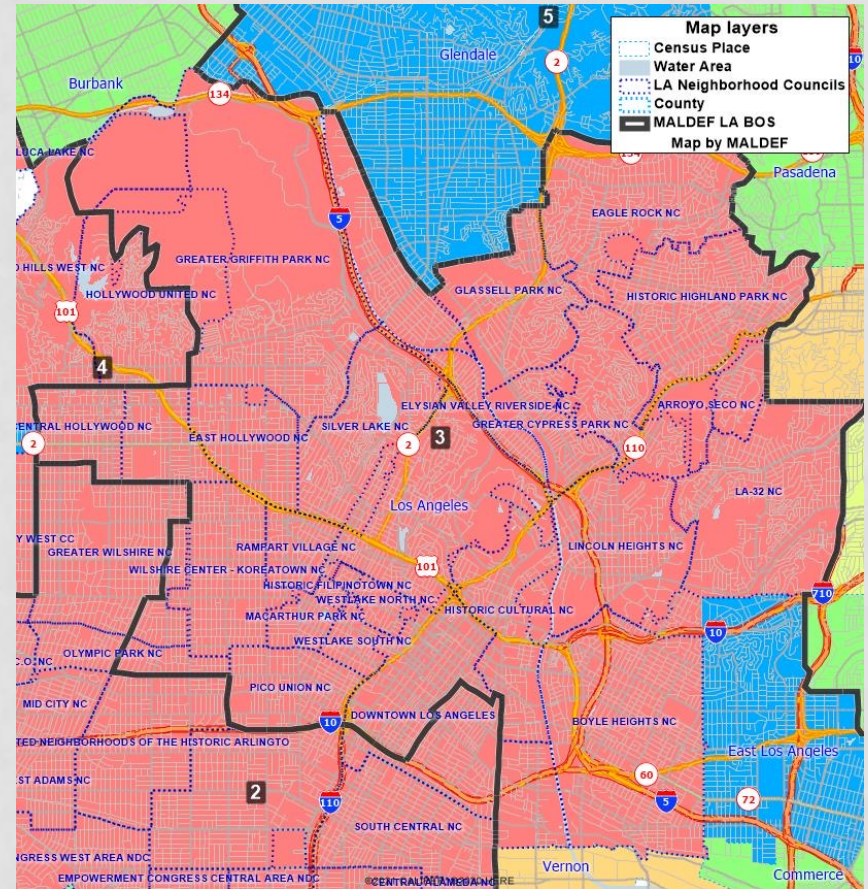


- **Total Population:** 1,993,807
 - **Deviation:** -15,781
 - **%Deviation:** -0.79%
 - **%Latino CVAP:** 57.55%
 - **%Black CVAP-DOJ:** 5.47%
 - **%Asian CVAP-DOJ:** 12.84%
 - **%Native American CVAP-DOJ:** 0.56%
 - **%NL-White CVAP:** 22.99%
-
- **Latino Majority District**
 - **NEW Latino Opportunity District**
-
- **Cities/Communities:**
 - East San Fernando Valley, Burbank (Neighborhood Councils east of I-5 whole)
 - Northeast Los Angeles City
 - East Los Angeles and Southeast Cities
 - “The I-5 Freeway” District

MALDEF BOS 3 DETAIL

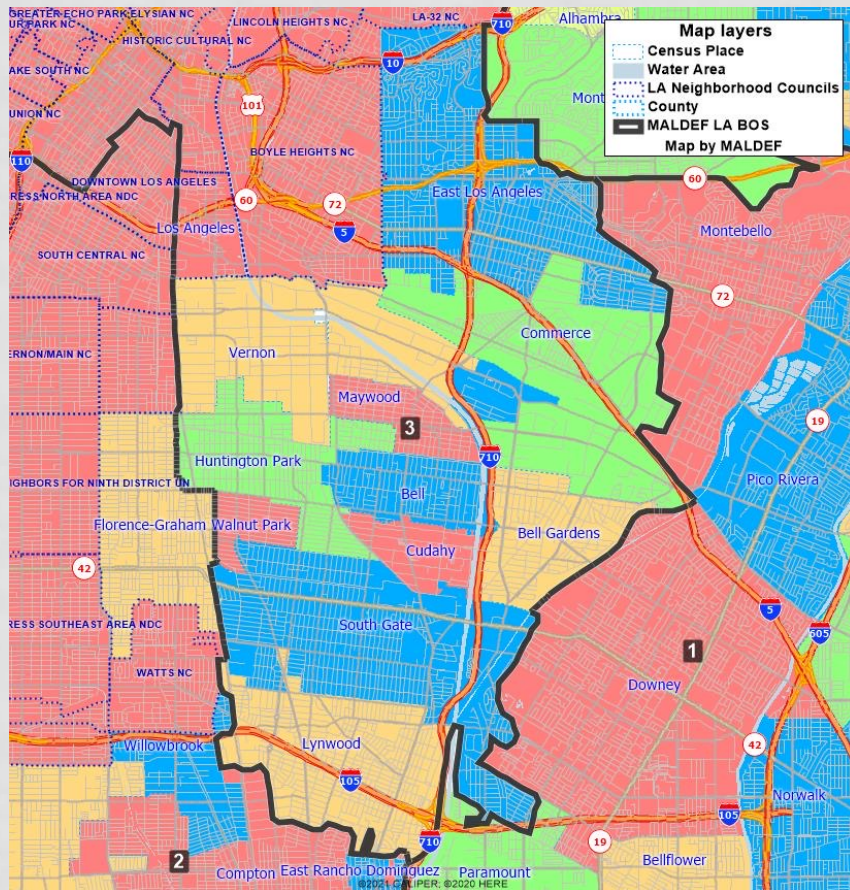


Northeast San Fernando Valley whole, using I-405 and Neighborhood Council boundaries. Burbank added for contiguity, but it also has some COI with North Hollywood.



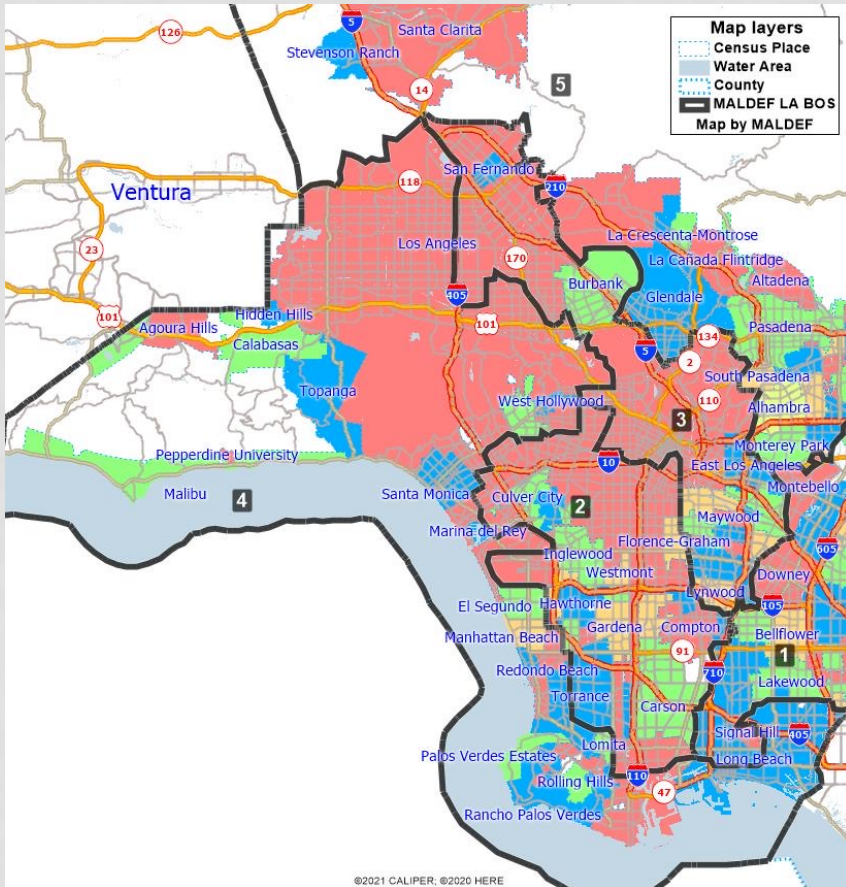
Northeast LA whole. Koreatown, Pico Union, and Westlake MacArthur Park united. Asian enclaves of Koreatown, Thai Town, Chinatown, Filipinotown, and Little Tokyo united.

MALDEF BOS 3 DETAIL



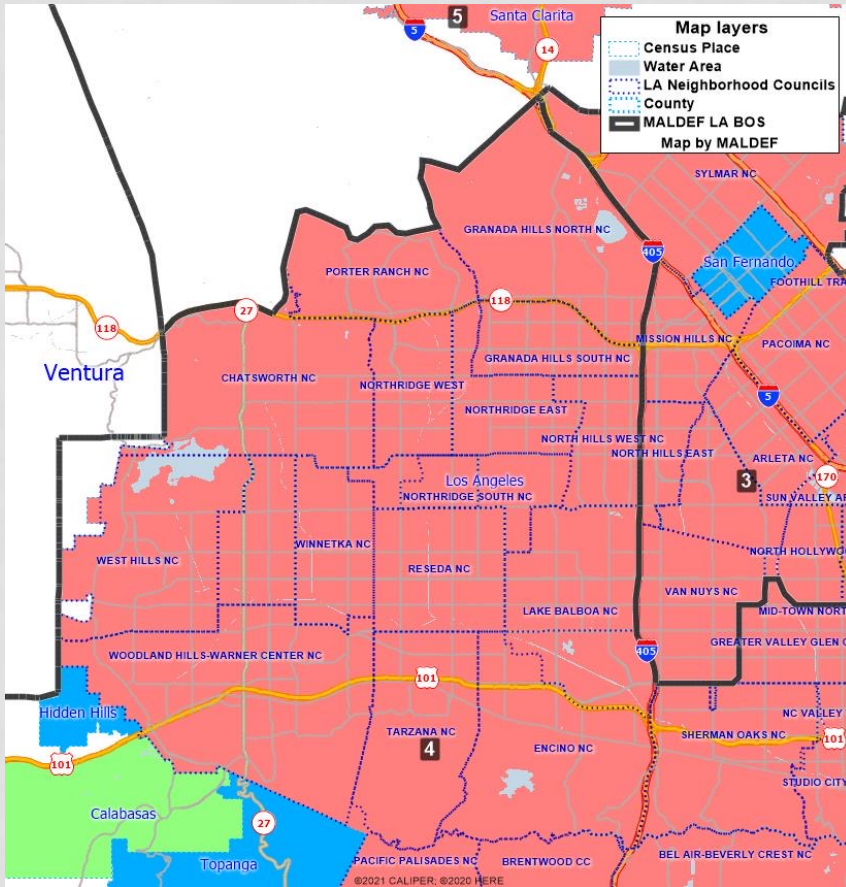
All Southeast cities united, along with East Los Angeles

MALDEF BOS 4

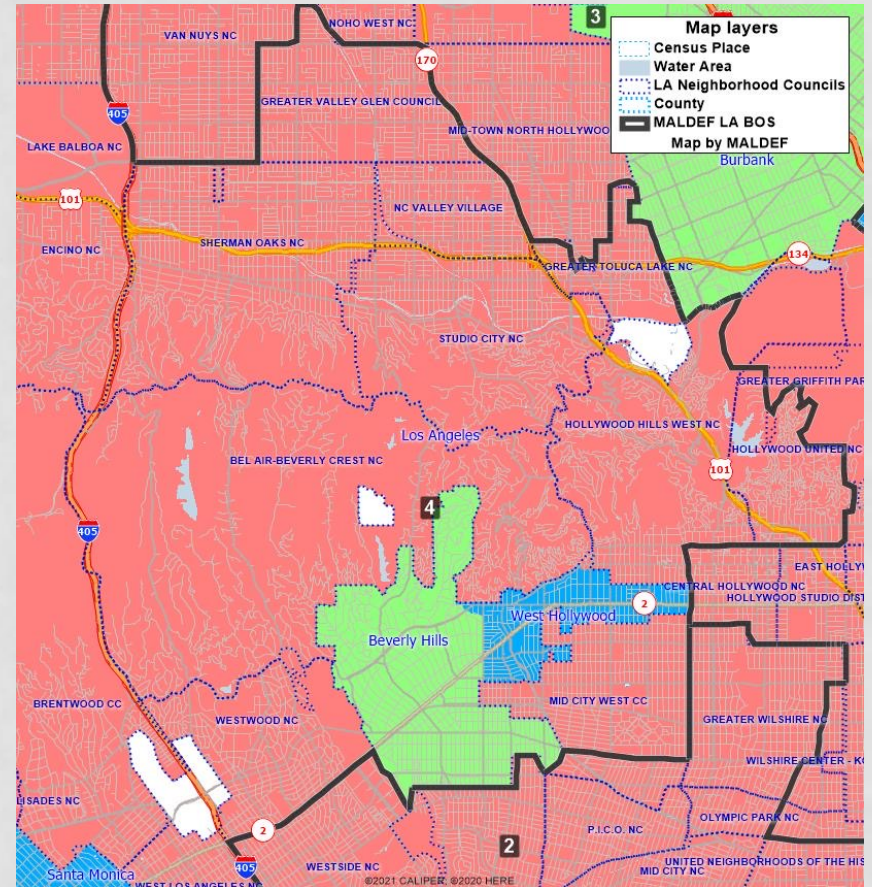


- **Total Population:** 2,033,011
 - **Deviation:** 23,423
 - **%Deviation:** +1.17%
 - **%Latino CVAP:** 18.50%
 - **%Black CVAP-DOJ:** 5.51%
 - **%Asian CVAP-DOJ:** 12.67%
 - **%Native American CVAP-DOJ:** 0.66%
 - **%NL-White CVAP:** 62.02%
-
- **Cities/Communities:**
 - West San Fernando Valley and West County
 - Coastal Communities/Cities
 - Palos Verdes Peninsula
 - San Pedro and Southeast Long Beach
 - Catalina Island

MALDEF BOS 4 DETAIL

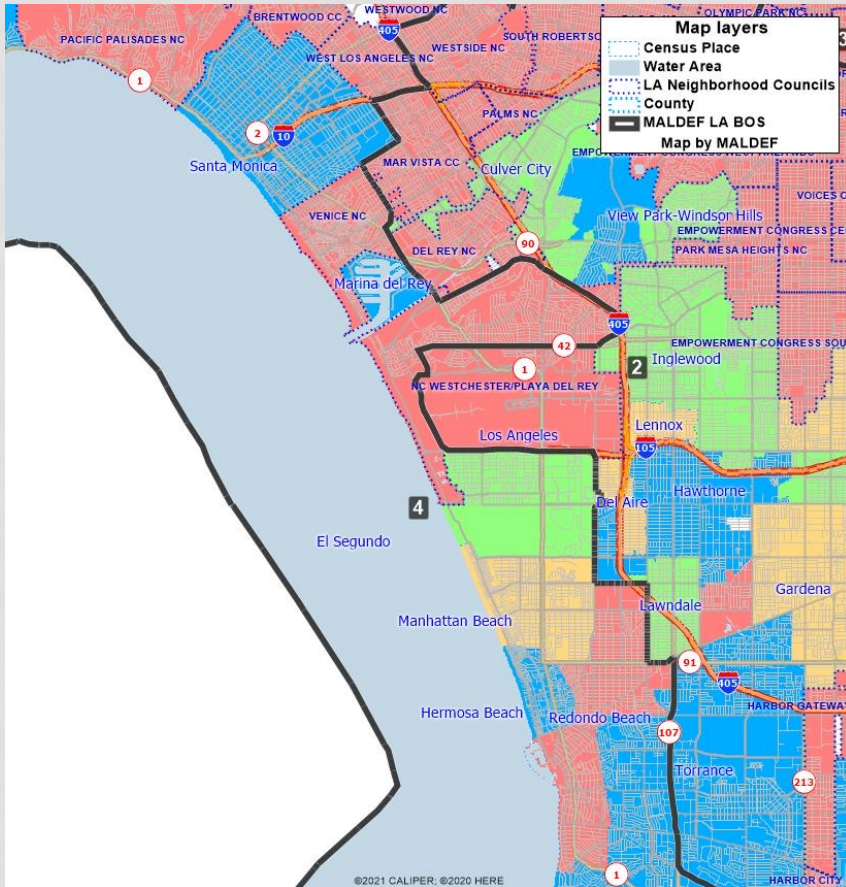


West San Fernando Valley united, using Los Angeles City Neighborhood Council boundaries.

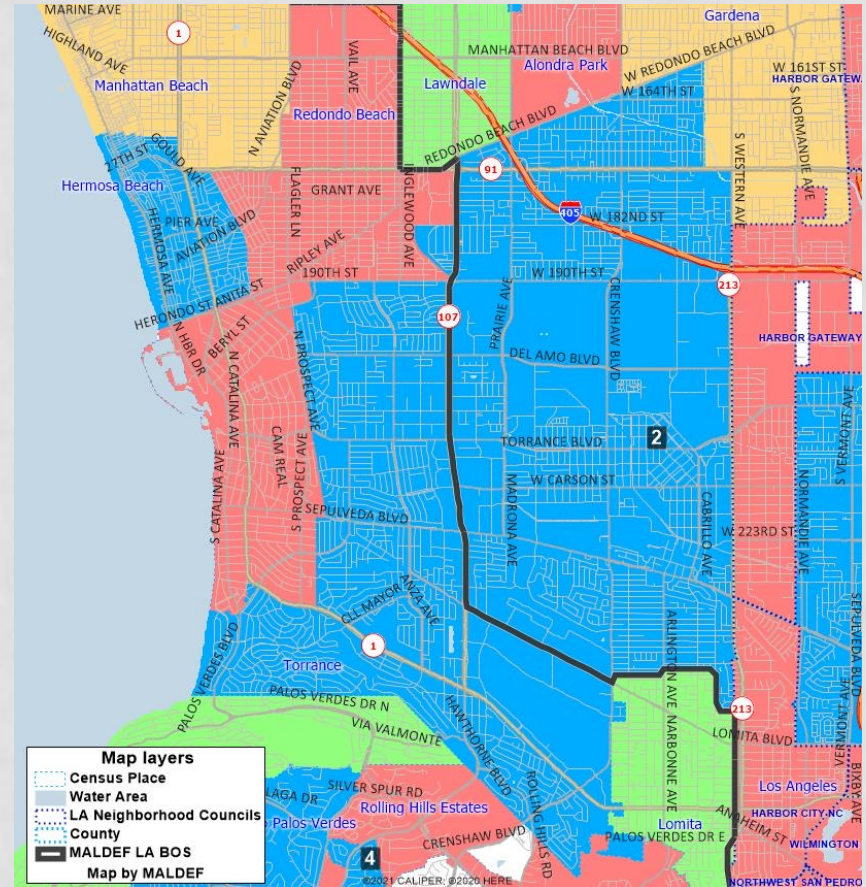


Santa Monica Mountains united.

MALDEF BOS 4 DETAIL

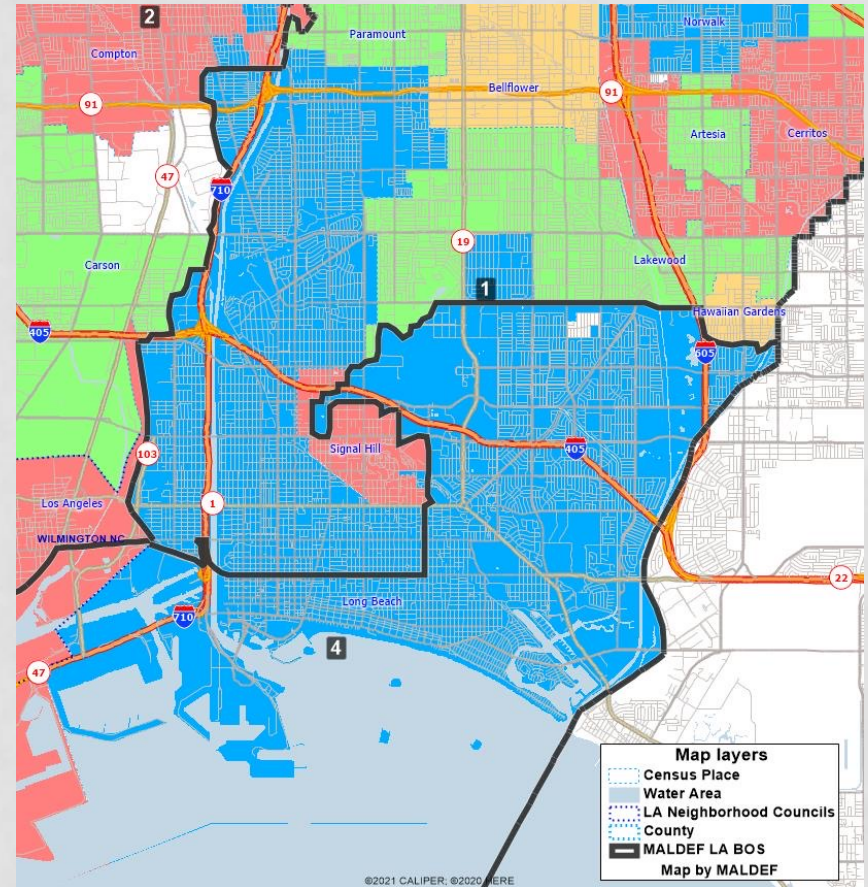
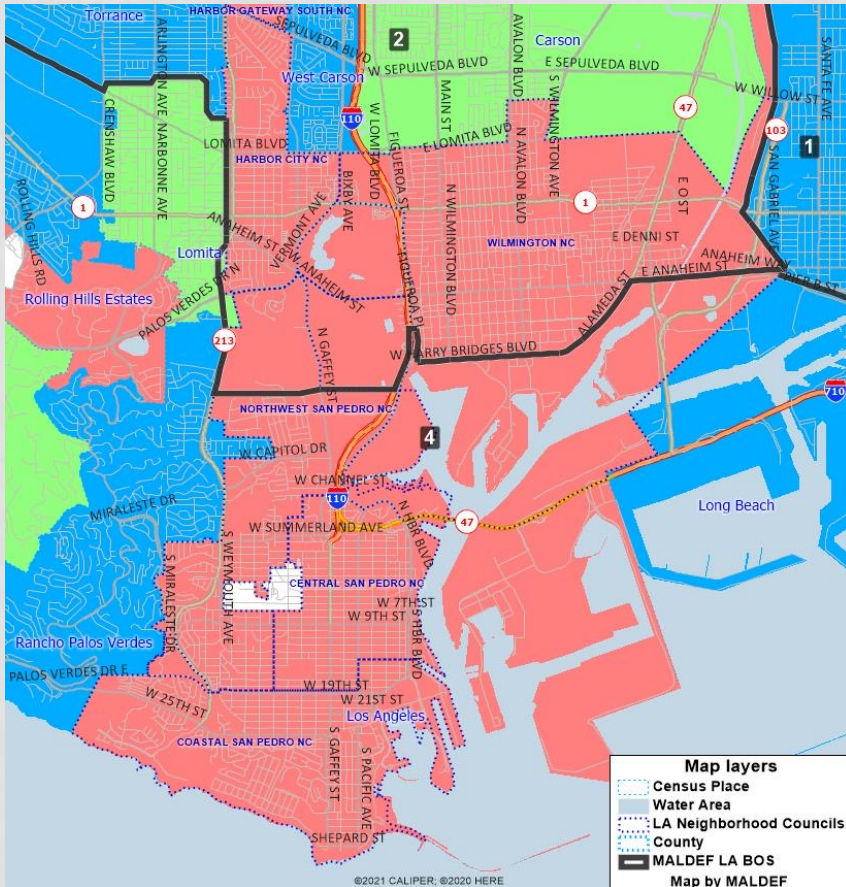


Coastal cities united.



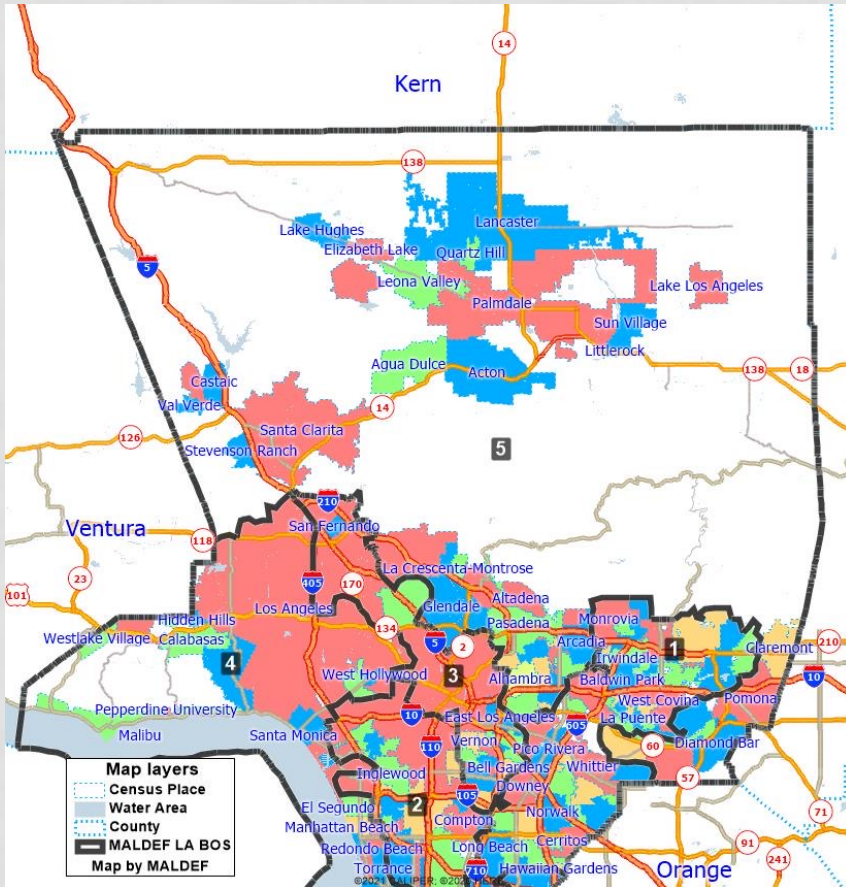
Torrance cut for total population reasons and to respect a key COI given by AAAJ-LA, to keep West Torrance and South Gardena together. Cut is Hawthorne Blvd and Lomita Blvd, mirroring a recommended division at Congressional level

MALDEF BOS 4 DETAIL



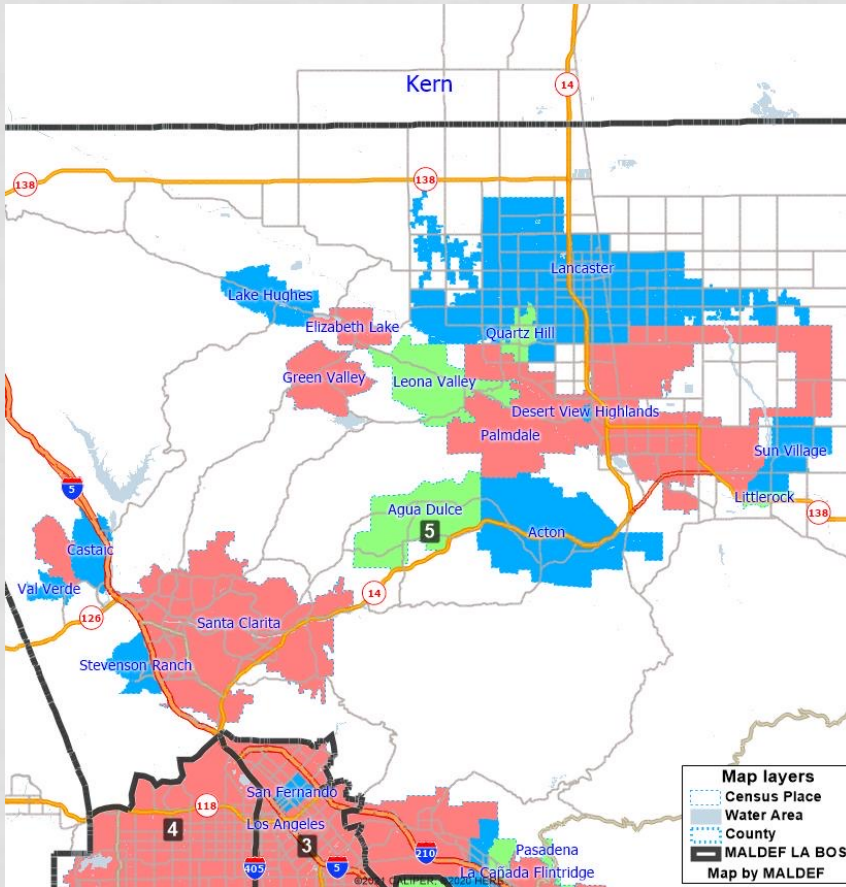
Long Beach cut for total population and Voting Rights Act consideration.

MALDEF BOS 5

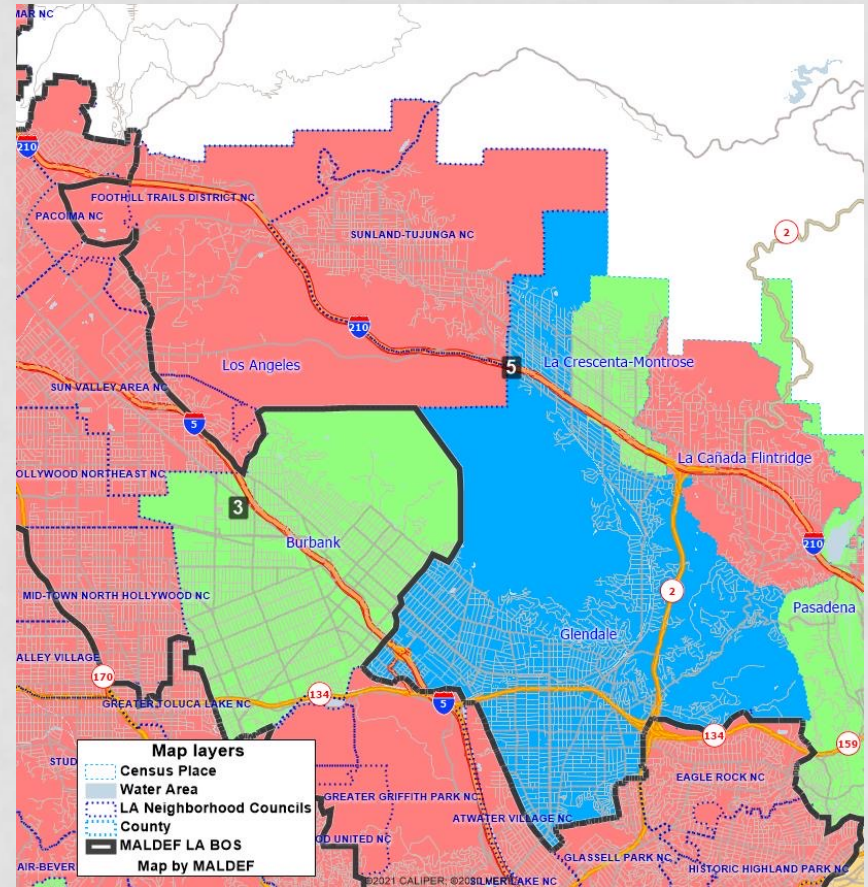


- **Total Population:** 1,993,040
 - **Deviation:** -16,548
 - **%Deviation:** -0.82%
 - **%Latino CVAP:** 29.59%
 - **%Black CVAP-DOJ:** 6.99%
 - **%Asian CVAP-DOJ:** 24.33%
 - **%Native American CVAP-DOJ:** 0.68%
 - **%NL-White CVAP:** 37.72%
-
- **Latino Influence District**
 - **Asian Influence District**
-
- **Cities/Communities:**
 - Antelope Valley
 - Santa Clarita, Tujunga/Sunland
 - Glendale, Pasadena
 - West San Gabriel Valley
 - Southeast San Gabriel Valley

MALDEF BOS 5 DETAIL

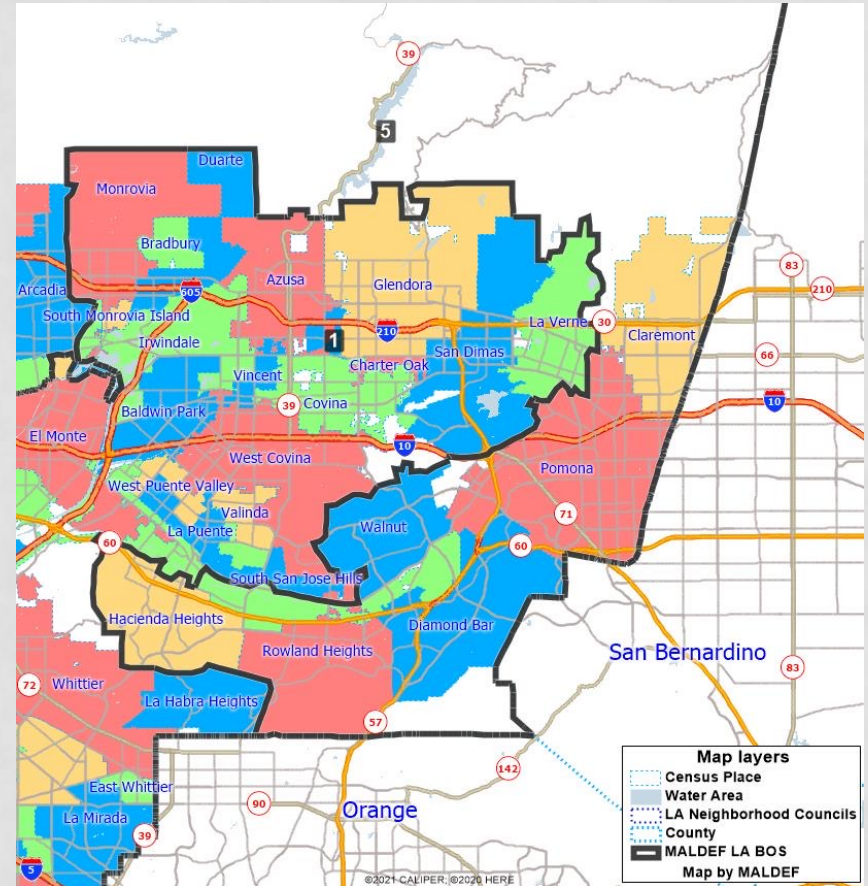
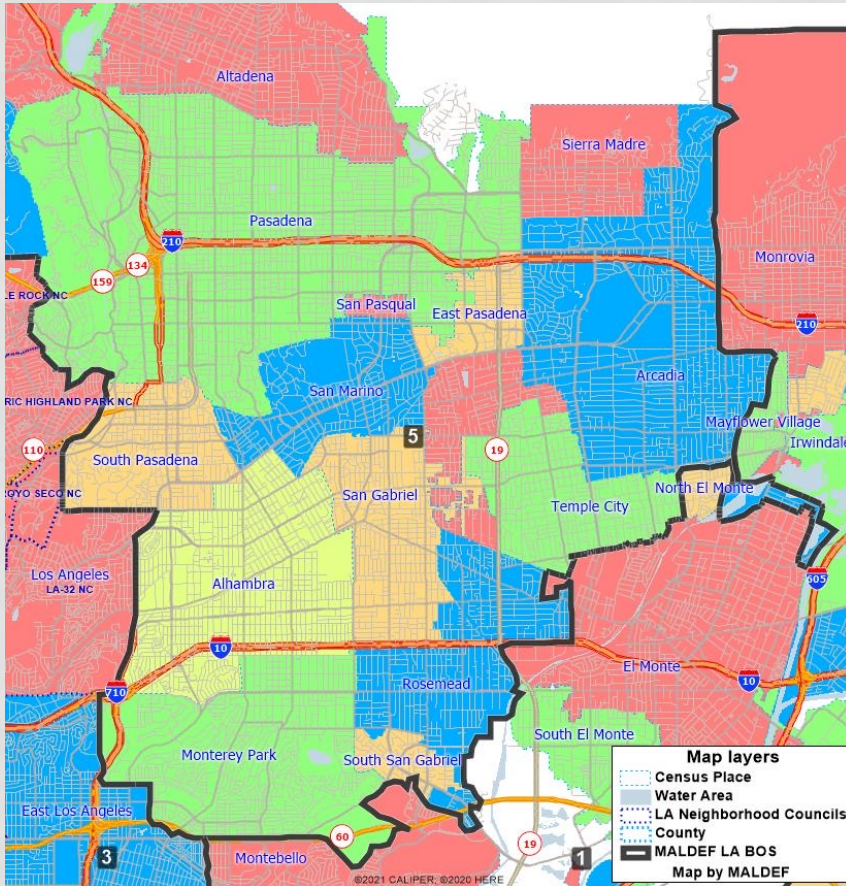


Antelope Valley united



I-210 freeway, via Tujunga/Sunland, provides some contiguity to the Santa Clarita and Antelope Valleys

MALDEF BOS 5 DETAIL



West San Gabriel Valley united with Hacienda Heights to Diamond Bar Asian communities to make an Asian influence district.

THANK YOU FROM TEAM MALDEF

Steven A. Ochoa
National Redistricting Coordinator
sochoa@maldef.org

Kathy Ramirez
Western Redistricting Coordinator
kramirez@maldef.org

Mayra Valadez
Western Redistricting Coordinator
Mvaladez@maldef.org

Gabriel Lizardo
National Redistricting Program Assistant
Glizardo@maldef.org

Mexican American Legal Defense and Educational Fund
634 S. Spring St
Los Angeles, CA 91724
213-629-2512